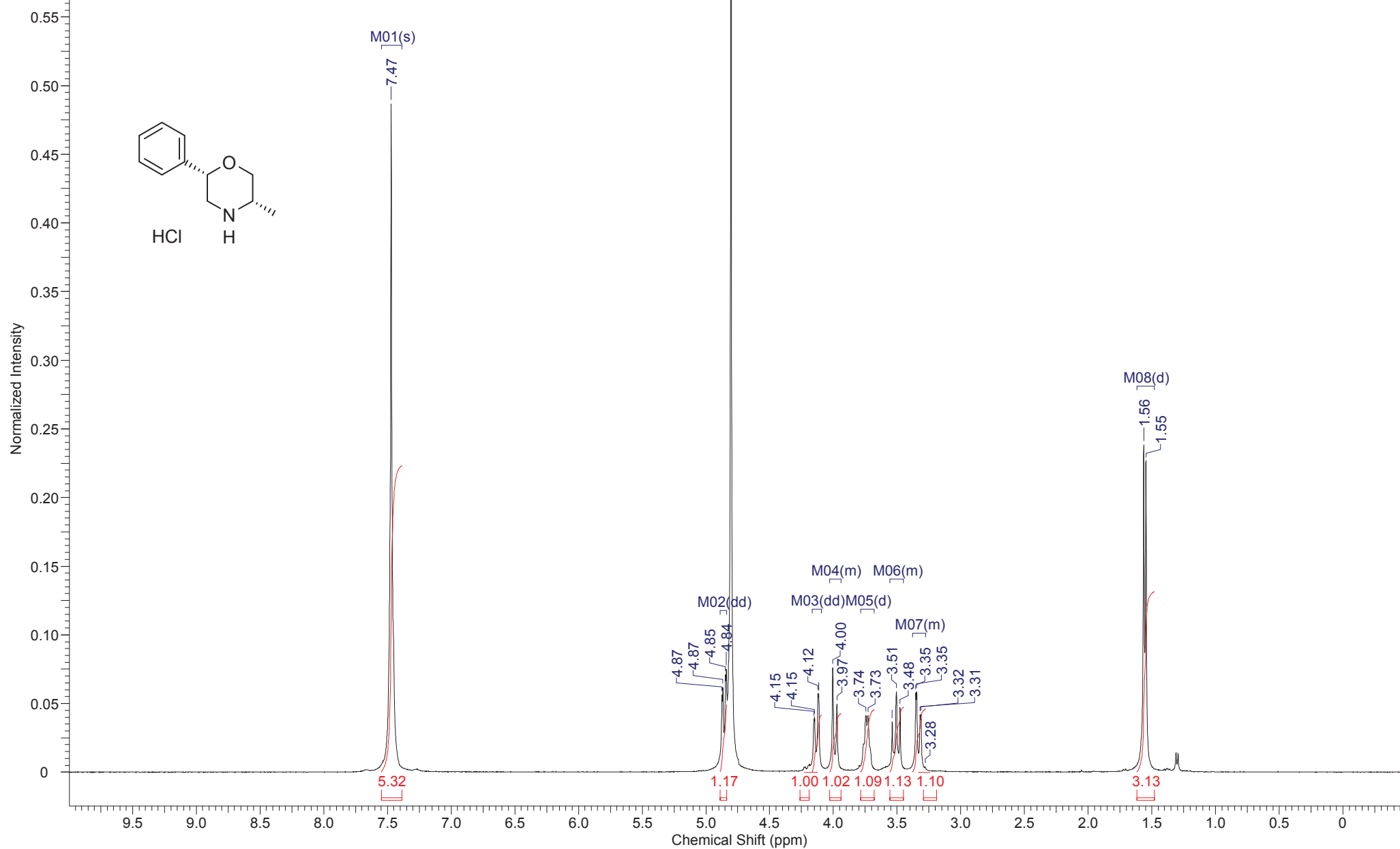
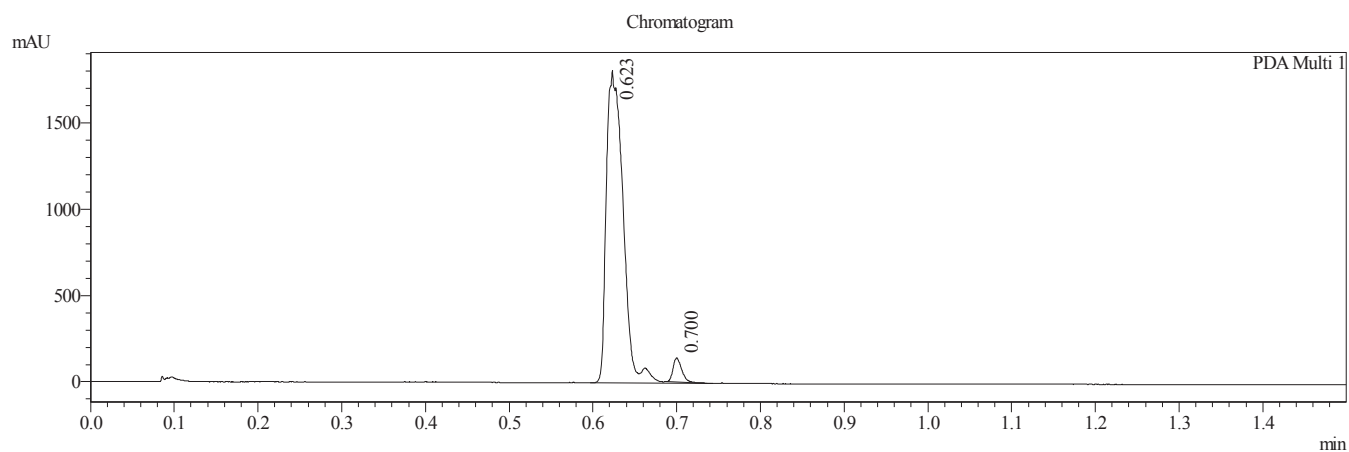


^1H NMR (400MHz, DEUTERIUM OXIDE) $\delta = 7.47$ (s, 5H), 4.86 (dd, $J=2.5, 11.0$ Hz, 1H), 4.13 (dd, $J=2.0, 13.1$ Hz, 1H), 4.03 - 3.94 (m, 1H), 3.74 (d, $J=6.5$ Hz, 1H), 3.56 - 3.45 (m, 1H), 3.38 - 3.28 (m, 1H), 1.55 (d, $J=7.0$ Hz, 3H)

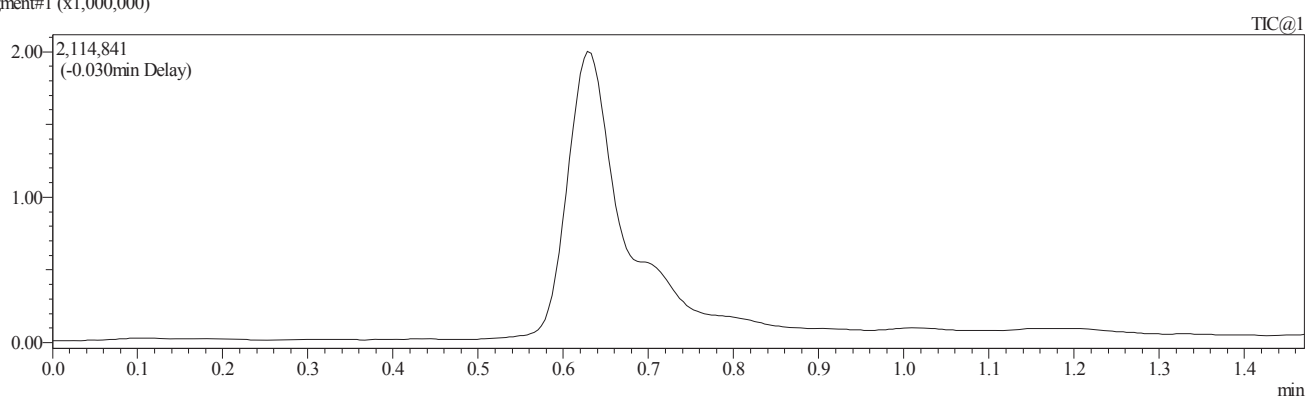
VerticalScaleFactor = 1



LCMS REPORT



1 PDA Multi 1 / 220nm 4nm
Segment#1 (x1,000,000)



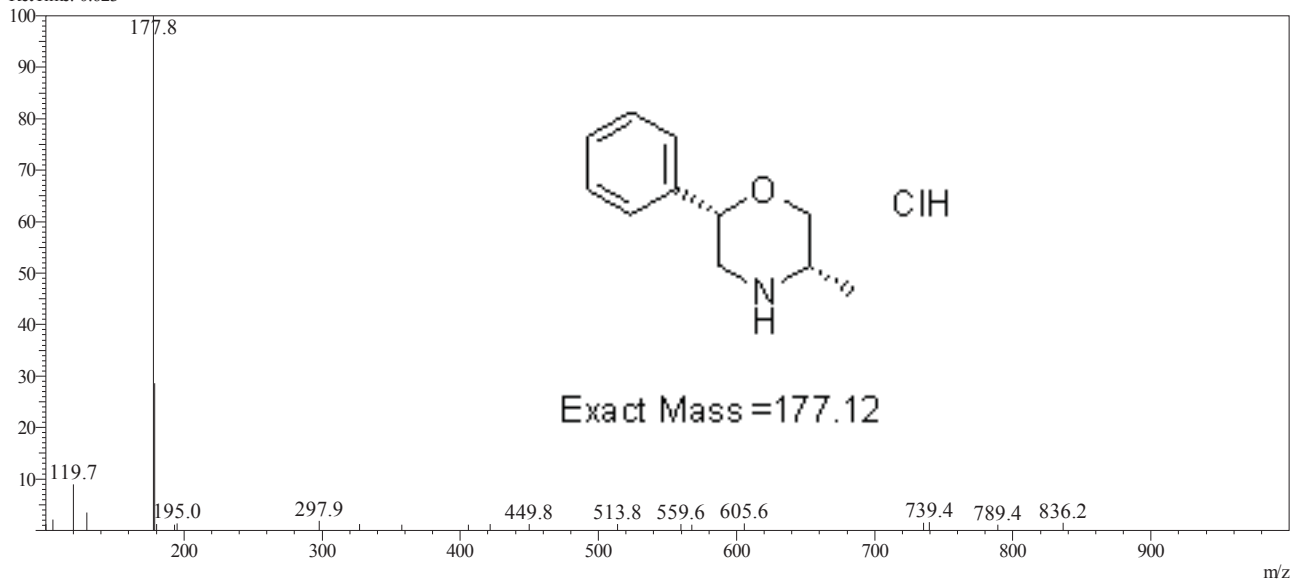
Integration Result

PDA Ch1 220nm 4nm

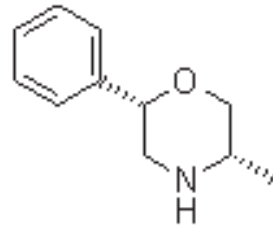
Peak#	Ret. Time	Height	Height %	USP Width	Area	Area %
1	0.623	1750197	93.116	0.034	2533904	96.117
2	0.700	129398	6.884	0.019	102371	3.883

MS Spectrum Graph

RetTime: 0.623



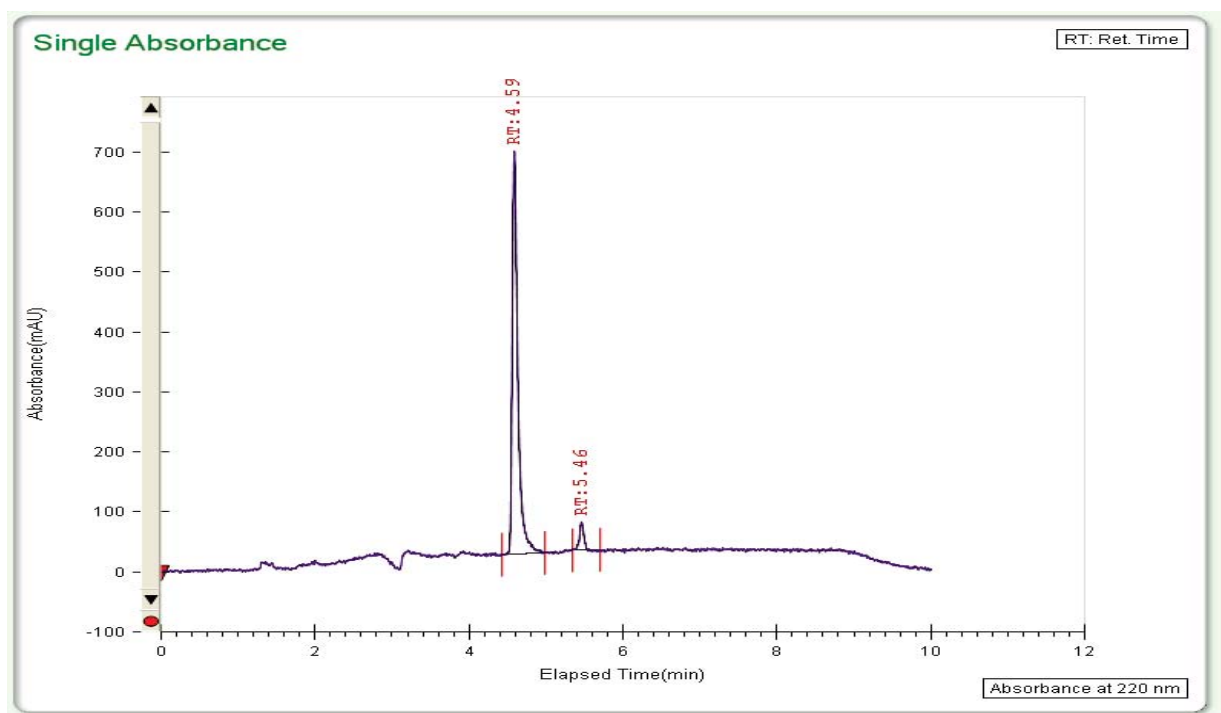
SFC CHIRAL REPORT



Column: AD-H

Co-Solvent: EtOH(0.05%DEA)

(2S,5S)-5-methyl-2-phenylmorpholine



Number	RT (min)	Area	Area %
1	4.59	3408.5587	97.5875
2	5.46	183.6525	2.4125

Peak Info