



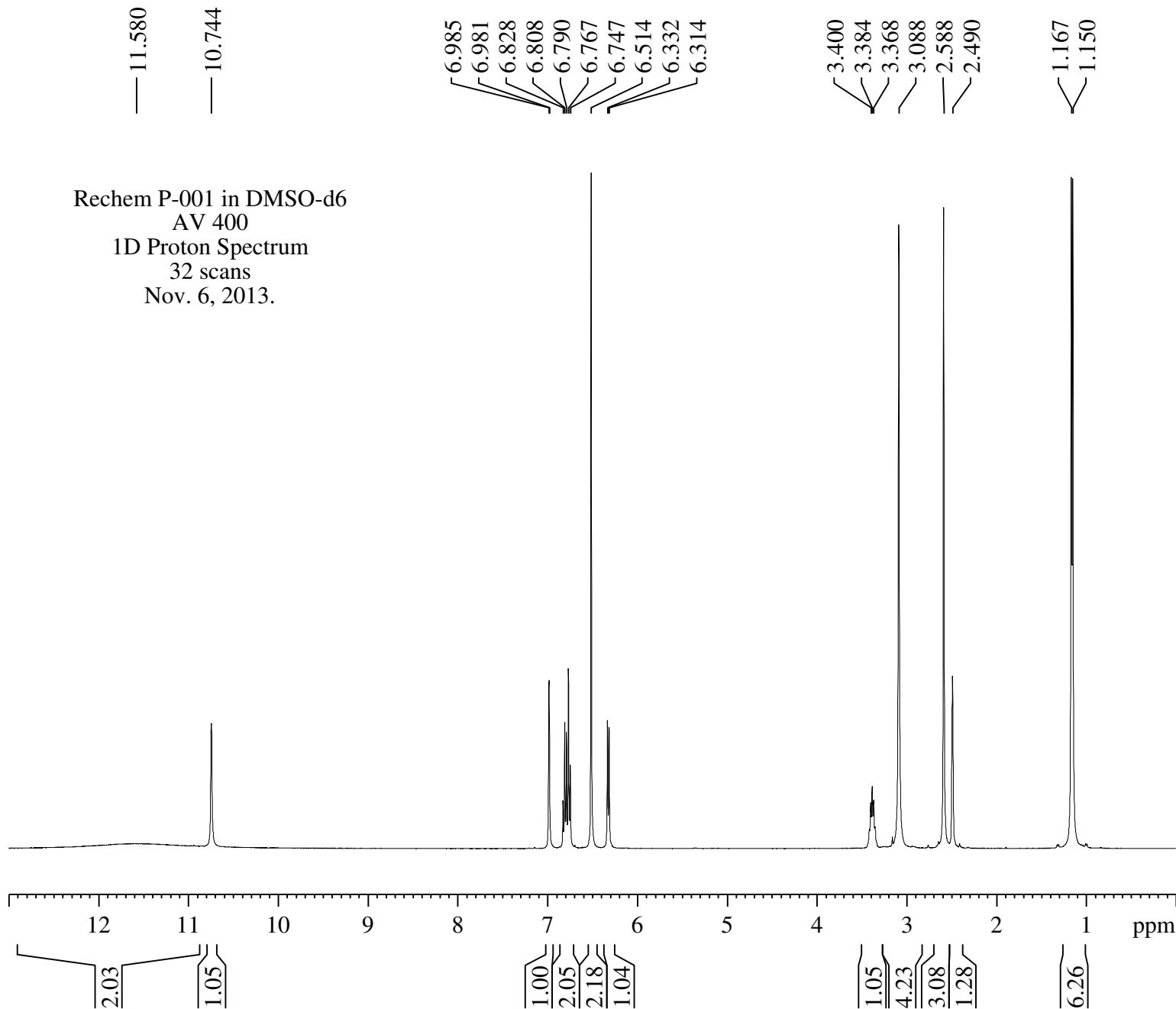
Current Data Parameters  
NAME RechemP001  
EXPNO 1  
PROCNO 1

F2 - Acquisition Parameters  
Date\_ 20131106  
Time 10.22  
INSTRUM av400  
PROBHD 5 mm PABBO BB-  
PULPROG zg30  
TD 32768  
SOLVENT DMSO  
NS 16  
DS 0  
SWH 8278.146 Hz  
FIDRES 0.252629 Hz  
AQ 1.9791873 sec  
RG 256  
DW 60.400 usec  
DE 6.00 usec  
TE 294.5 K  
D1 2.5000000 sec  
TD0 1

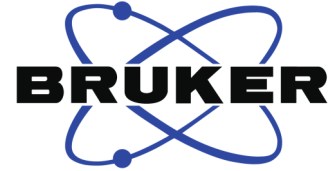
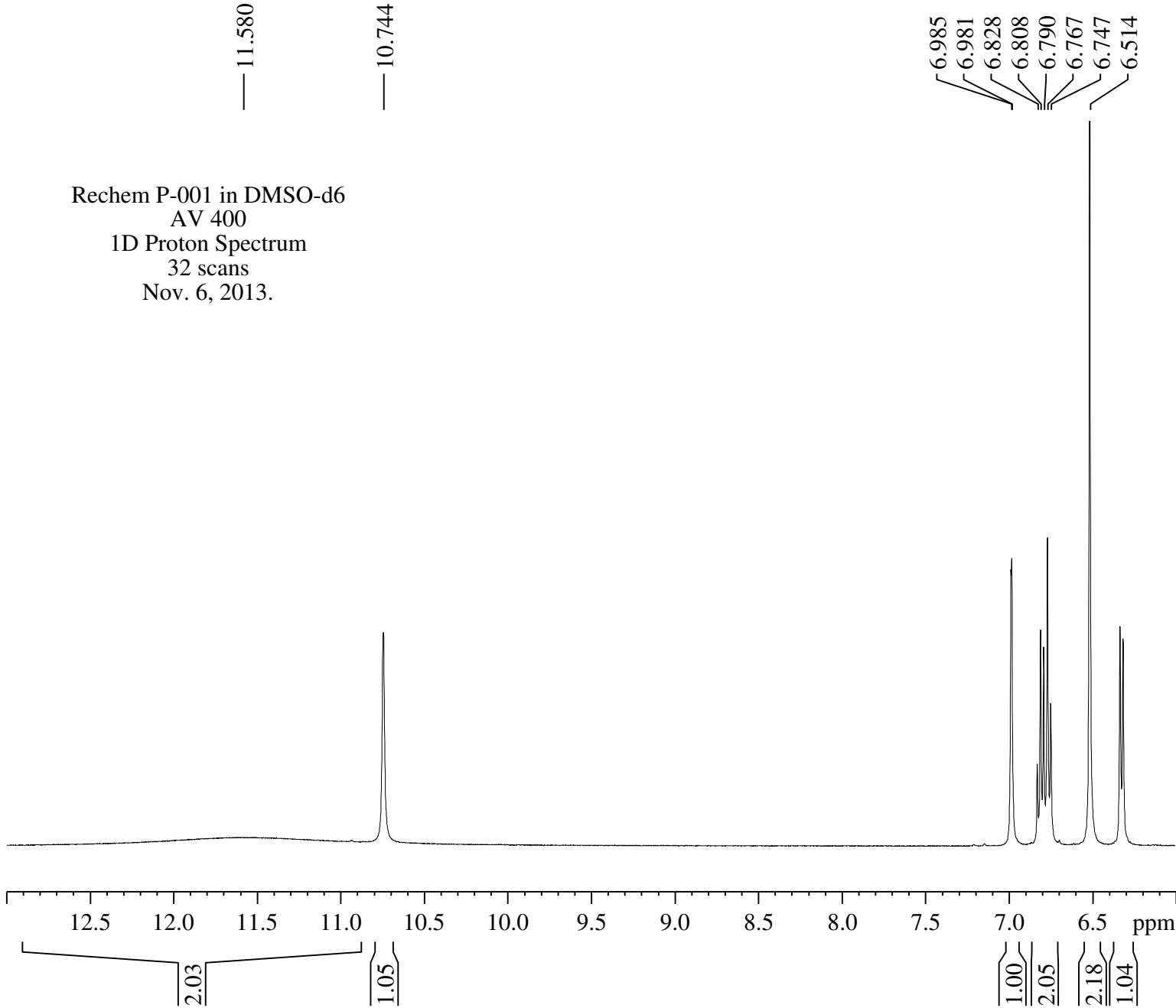
===== CHANNEL f1 =====  
NUC1 1H  
P1 9.80 usec  
PL1 0 dB  
PL1W 9.04279137 W  
SFO1 400.1324710 MHz

F2 - Processing parameters  
SI 16384  
SF 400.1300061 MHz  
WDW EM  
SSB 0  
LB 0.30 Hz  
GB 0  
PC 1.00

Rechem P-001 in DMSO-d6  
AV 400  
1D Proton Spectrum  
32 scans  
Nov. 6, 2013.



Rechem P-001 in DMSO-d6  
AV 400  
1D Proton Spectrum  
32 scans  
Nov. 6, 2013.

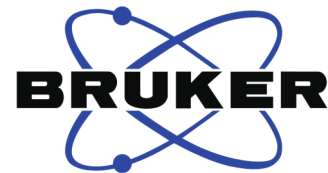


Current Data Parameters  
NAME RechemP001  
EXPNO 1  
PROCNO 1

F2 - Acquisition Parameters  
Date\_ 20131106  
Time 10.22  
INSTRUM av400  
PROBHD 5 mm PABBO BB-  
PULPROG zg30  
TD 32768  
SOLVENT DMSO  
NS 16  
DS 0  
SWH 8278.146 Hz  
FIDRES 0.252629 Hz  
AQ 1.9791873 sec  
RG 256  
DW 60.400 usec  
DE 6.00 usec  
TE 294.5 K  
D1 2.5000000 sec  
TD0 1

===== CHANNEL f1 =====  
NUC1 1H  
P1 9.80 usec  
PL1 0 dB  
PL1W 9.04279137 W  
SFO1 400.1324710 MHz

F2 - Processing parameters  
SI 16384  
SF 400.1300061 MHz  
WDW EM  
SSB 0  
LB 0.30 Hz  
GB 0  
PC 1.00



Current Data Parameters  
NAME RechemP001  
EXPNO 1  
PROCNO 1

F2 - Acquisition Parameters  
Date\_ 20131106  
Time 10.22  
INSTRUM av400  
PROBHD 5 mm PABBO BB-  
PULPROG zg30  
TD 32768  
SOLVENT DMSO  
NS 16  
DS 0  
SWH 8278.146 Hz  
FIDRES 0.252629 Hz  
AQ 1.9791873 sec  
RG 256  
DW 60.400 usec  
DE 6.00 usec  
TE 294.5 K  
D1 2.5000000 sec  
TD0 1

===== CHANNEL f1 =====  
NUC1 1H  
P1 9.80 usec  
PL1 0 dB  
PL1W 9.04279137 W  
SFO1 400.1324710 MHz

F2 - Processing parameters  
SI 16384  
SF 400.1300061 MHz  
WDW EM  
SSB 0  
LB 0.30 Hz  
GB 0  
PC 1.00

