

10.836
10.766

7.247
7.225
7.190
7.185
6.737
6.731
6.715
6.709
3.766
3.612
3.600
3.595
3.584
3.579
3.343
3.271
3.262
3.252
3.242
3.233
3.182
3.153
3.140
3.123
3.107
3.092
2.700
2.687
2.494
2.490
2.486

Rechem L-001 in DMSO-d6
AV 400
1D Proton Spectrum
32 scans
Nov. 6, 2013.



Current Data Parameters
NAME RechemL001
EXPNO 1
PROCNO 1

F2 - Acquisition Parameters
Date_ 20131106
Time 9.51
INSTRUM av400
PROBHD 5 mm PABBO BB-
PULPROG zg30
TD 32768
SOLVENT DMSO
NS 16
DS 0
SWH 8278.146 Hz
FIDRES 0.252629 Hz
AQ 1.9791873 sec
RG 256
DW 60.400 usec
DE 6.00 usec
TE 294.6 K
D1 2.50000000 sec
TD0 1

===== CHANNEL f1 =====
NUC1 1H
P1 9.80 usec
PL1 0 dB
PL1W 9.04279137 W
SFO1 400.1324710 MHz

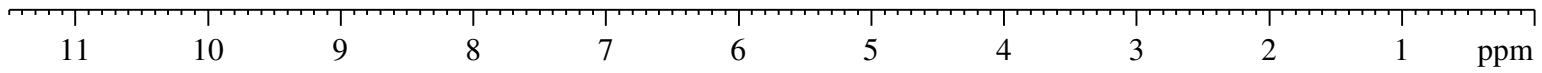
F2 - Processing parameters
SI 16384
SF 400.1300061 MHz
WDW EM
SSB 0
LB 0.30 Hz
GB 0
PC 1.00

1.00
0.91

1.00
2.01
1.00

3.02
1.02
0.45
1.08
2.98
2.99

2.95
3.05



10.836
10.766

Rechem L-001 in DMSO-d6
AV 400
1D Proton Spectrum
32 scans
Nov. 6, 2013.

7.247
7.225
7.190
7.185
6.737
6.731
6.715
6.709

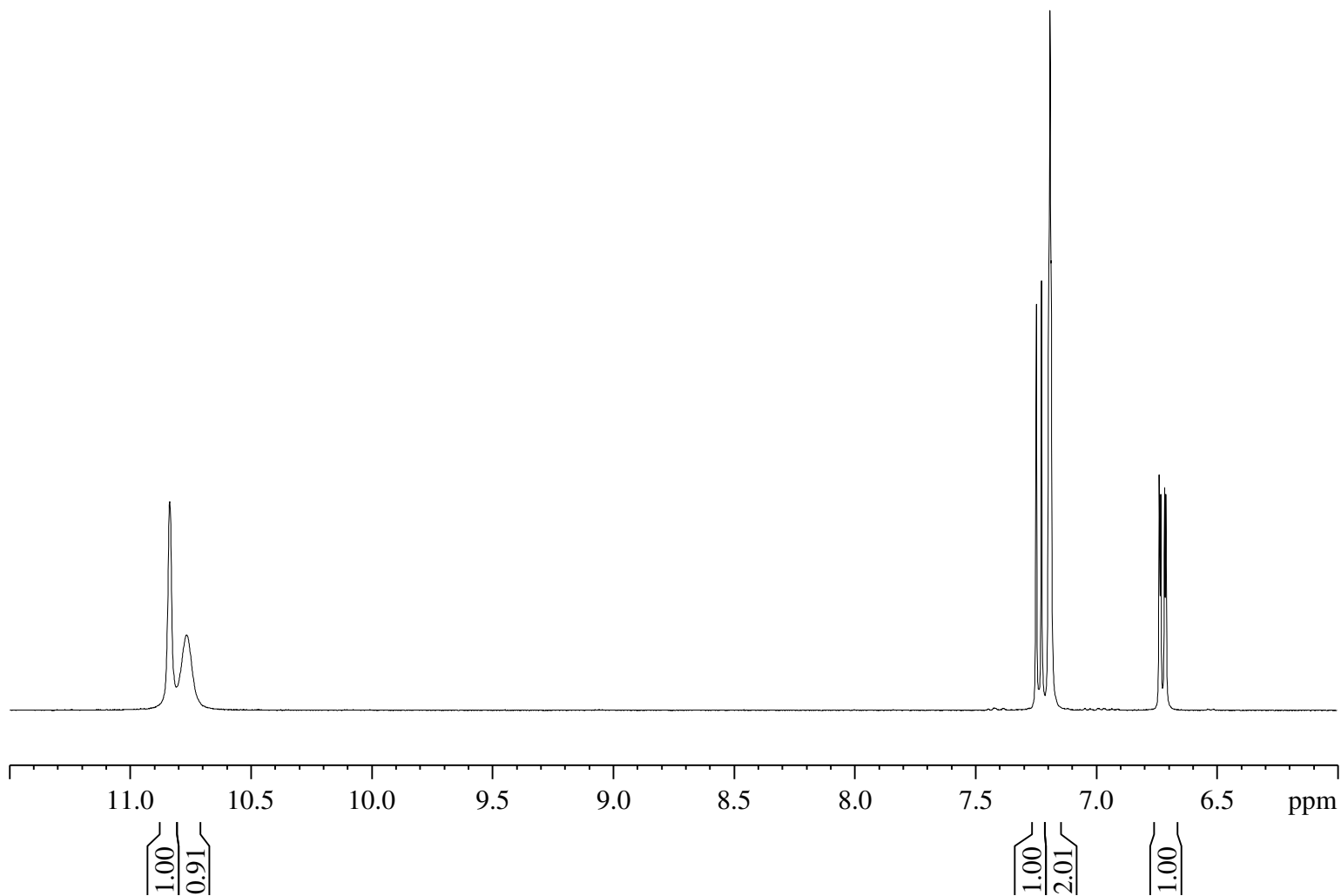


Current Data Parameters
NAME RechemL001
EXPNO 1
PROCNO 1

F2 - Acquisition Parameters
Date_ 20131106
Time 9.51
INSTRUM av400
PROBHD 5 mm PABBO BB-
PULPROG zg30
TD 32768
SOLVENT DMSO
NS 16
DS 0
SWH 8278.146 Hz
FIDRES 0.252629 Hz
AQ 1.9791873 sec
RG 256
DW 60.400 usec
DE 6.00 usec
TE 294.6 K
D1 2.50000000 sec
TD0 1

===== CHANNEL f1 =====
NUC1 1H
P1 9.80 usec
PL1 0 dB
PL1W 9.04279137 W
SFO1 400.1324710 MHz

F2 - Processing parameters
SI 16384
SF 400.1300061 MHz
WDW EM
SSB 0
LB 0.30 Hz
GB 0
PC 1.00





Current Data Parameters

NAME RechemL001
EXPNO 1
PROCNO 1

F2 - Acquisition Parameters

Date_ 20131106
Time 9.51
INSTRUM av400
PROBHD 5 mm PABBO BB-
PULPROG zg30
TD 32768
SOLVENT DMSO
NS 16
DS 0
SWH 8278.146 Hz
FIDRES 0.252629 Hz
AQ 1.9791873 sec
RG 256
DW 60.400 usec
DE 6.00 usec
TE 294.6 K
D1 2.50000000 sec
TD0 1

===== CHANNEL f1 =====

NUC1 1H
P1 9.80 usec
PL1 0 dB
PL1W 9.04279137 W
SFO1 400.1324710 MHz

F2 - Processing parameters

SI 16384
SF 400.1300061 MHz
WDW EM
SSB 0
LB 0.30 Hz
GB 0
PC 1.00

